

TEGRETOL

WHAT IS THE DRUGS GENERIC(PHARMACISTS) NAME ?

Carbamazepine

WHAT IS THE DRUG USED FOR ?

The treatment of epilepsy(seizures)(esp. Partial seizures).
Trigeminal Neuralgia / Glossopharyngeal Neuralgia.
Peripheral nerve pain.

HOW DOES THE DRUG WORK ?

The primary action in the treatment of epilepsy is to prevent the spread of seizure activity in the motor part of the brain. It does this by stabilising the walls of over excited neurons in the brain.

HOW LONG BEFORE IT WORKS ?

This depends on lots of factors but the drug does not reach a stable concentration in the body until about 1 or 2 weeks .

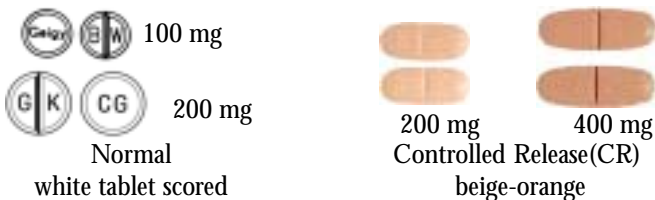
HOW DO WE KNOW THAT YOU ARE GETTING ENOUGH ?

Usually the stopping of your seizures or pains tells us this We will do blood levels on a regular basis to check that you are not getting too much. This does not tell us if the drug is effective only if it is too high. The first level is usually done at about one month.

CAN I CHANGE MY DOSE ?

This may be possible but you should not change your dose unless instructed by your doctor or if you develop a possible side effect. In which case you should immediately stop the medication while contacting your doctor. Stopping abruptly can cause a seizure.

WHAT ARE THE TABLET STRENGTHS AND WHAT SHOULD MY TABLETS LOOK LIKE ?



HOW MUCH/HOW LONG AND WHEN DO I TAKE IT?

This is decided by your doctor but you are usually started on 200mg 3 times daily with food. After your blood level the dose may be changed. Usually we need about 1200mg per day. The dose is increased by about 200 mg each time until we get to the correct blood level.

WHAT DRUGS INTERACT WITH TEGRETOL ?

There are many drugs that can increase or decrease the blood levels, once you are stable if you change any medication you should recheck your Tegretol levels. Esp. alcohol/aspirin/anticoagulants anti-depressants,paracetamol.

THIS LEAFLET IS AIMED AT PROVIDING SOME INFORMATION ABOUT THE DRUG PRESCRIBED BY YOUR DOCTOR. THIS MAY NOT PROVIDE THE LATEST INFORMATION AS DRUG INFORMATION IS CONSTANTLY CHANGING. IT AIMS TO PROVIDE ANSWERS TO THE MORE COMMONLY ASKED QUESTIONS.



WHAT SHOULD I TELL THE DOCTOR BEFORE I TAKE THIS NEW MEDICATION ?

If you have had a reaction to this drug in the past or to a tricyclic antidepressant.

If you are pregnant(or breast feeding) or planning a pregnancy. Any medical conditions especially

kidney disease	Low blood pressure
heart disease	Blood/Platelet disorders
liver disease	Glaucoma
Prostate disease	Porphyria

WHAT ARE SOME OF THE SIDE EFFECTS

Allergic symptoms of breathlessness or rash.

Severe skin reaction

Blood disorders May affect bone marrow to give anemia
 May cause easy bruising as reduces platelets

Liver Failure Need blood tests to check !

Foetal abnormalities

Confusion

Drowsiness

Overdose

Slurred speech	Drowsiness
Difficulty walking	Confusion

WHAT DO I DO IF I THINK I HAVE A SIDE EFFECT

As a general rule contact your doctor immediately and do not take any medication while waiting. Some side effects are life threatening and if any of the below occur it is important to present to a hospital emergency immediately

Asthma/sudden shortness of breath or difficulty breathing.

Severe rash/skin reaction

Swelling of face /lips/hands/throat.

Any of the overdose symptoms

Easy Bruising

Abdominal pain Or JAUNDICE(Skin turning Yellow)

Mouth ulcers

ALL DRUGS HAVE RISKS AND BENEFITS IF YOU HAVE ANY CONCERNS ABOUT TAKING ANY MEDICATION DISCUSS THIS WITH YOUR DOCTOR.

IT IS IMPORTANT TO CHECK WITH YOUR PHARMACIST ABOUT THE DRUGS YOU ARE TAKING AND ANY AFFECTS THAT IT MAY HAVE ON OTHER DRUGS THAT YOU ARE TAKING AND ALSO THE EFFECTS OTHER DRUGS WILL HAVE ON YOUR NEW DRUGS.